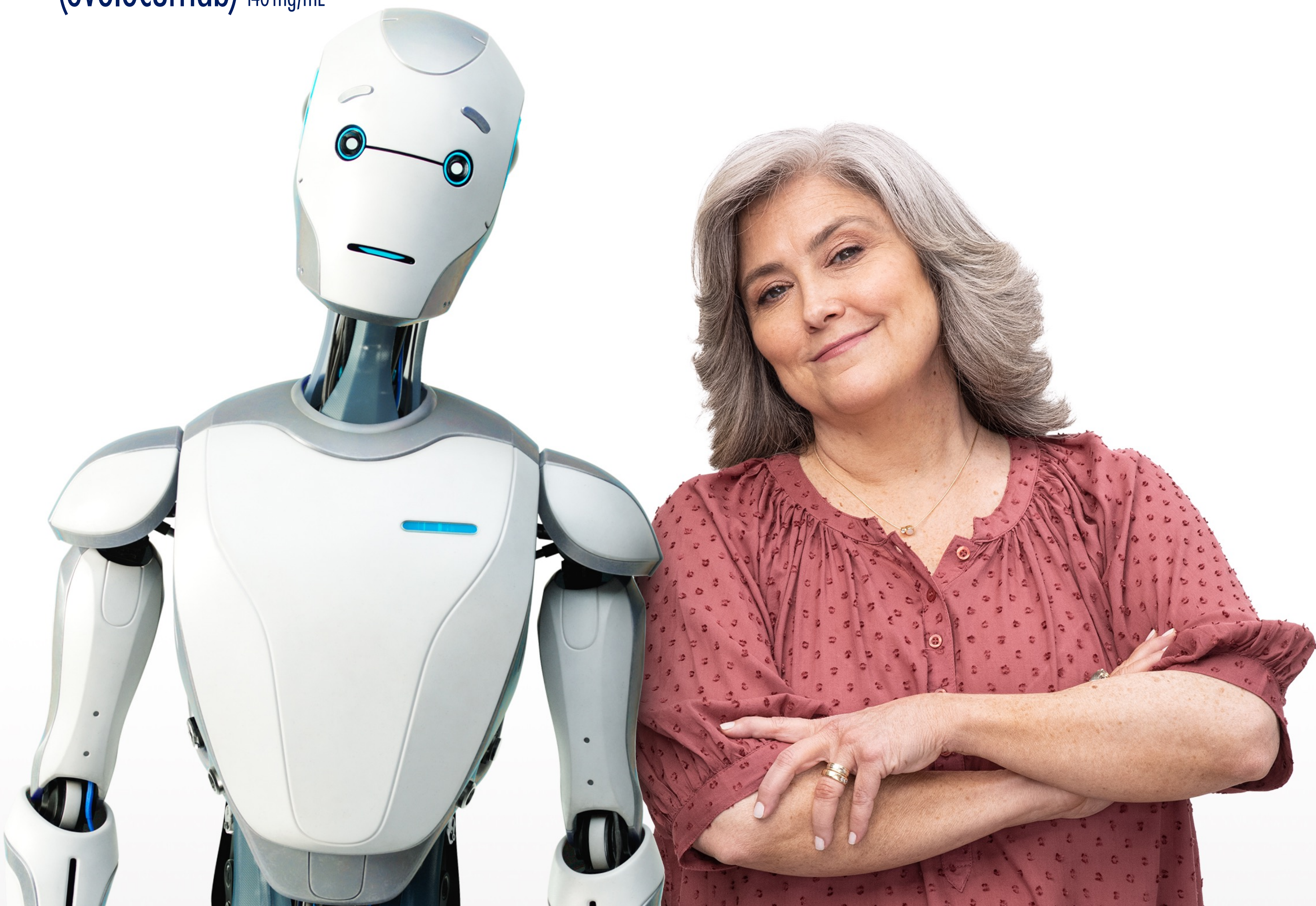


For adults with heart disease



# WELCOME TO REPATHA®



## What you need to know about getting started, including Copay Card\* information.

\*For eligible commercially insured patients only. Program maximums apply. See page 2 for a summary of the terms and conditions.



### What is Repatha®?

Repatha® is an injectable prescription medicine used:

- in adults with cardiovascular disease to reduce the risk of heart attack, stroke, and certain types of heart surgery.
- along with diet alone or together with other cholesterol-lowering medicines in adults with high blood cholesterol levels called primary hyperlipidemia (including a type of high cholesterol called heterozygous familial hypercholesterolemia [HeFH]) to reduce low density lipoprotein (LDL) or bad cholesterol.

### Important Safety Information

**Do not use Repatha® if you** are allergic to evolocumab or to any of the ingredients in Repatha®.

**Please see additional Important Safety Information [here](#).**

WELCOME TO  
REPATHA®

FILLING YOUR  
PRESCRIPTION

GETTING  
STARTED

HOW TO  
USE REPATHA®

WHAT TO  
EXPECT ON  
REPATHA®

REAL  
PATIENT  
STORIES

IMPORTANT  
SAFETY  
INFORMATION

SUPPORT



YOU MAY PAY \$5 PER MONTH\*



## IF YOU HAVE COMMERCIAL INSURANCE, THE REPATHA® COPAY CARD MAY HELP.

 **Sign up** for the Repatha® Copay Card at [Repatha.com/copay](https://Repatha.com/copay) or by calling **1-844-REPATHA (1-844-737-2842)**



 **Share** your copay card information with your pharmacist

 **Pick up** your prescription and pay as little **\$5 per month\***

### SUMMARY OF REPATHA® COPAY CARD TERMS AND CONDITIONS

It is important that every patient read and understand the full Repatha® (evolocumab) Copay Card Terms and Conditions. The following summary is not a substitute for reviewing the Terms and Conditions in their entirety.

As further described in the full terms and conditions, in general:

- The Repatha® Copay Card is open to patients with commercial insurance, regardless of financial need. The program is not valid for patients whose Repatha® prescription is paid for in whole or in part by Medicare, Medicaid, or any other federal or state programs. It is not valid for cash-paying patients or where prohibited by law.
- With the Repatha® Copay Card, a commercially insured patient who meets eligibility criteria may pay as little as a \$5 copay per month for their Repatha® monthly out-of-pocket costs. Monthly out-of-pocket costs include copayment, co-insurance, and deductible out-of-pocket costs. Amgen will pay the remaining eligible out-of-pocket costs on behalf of the patient up to a Maximum Monthly Benefit, a Maximum Annual Program Benefit and/or the Patient Total Program Benefit. Patients are responsible for all amounts that exceed these limits.
- The program provides assistance up to a Maximum Monthly Benefit except that the Maximum Monthly Benefit will not apply to the first three (3) fills of the Repatha® Copay Card for Repatha® in any given calendar year.
- Offer is subject to change or discontinuation without notice.
- The Repatha® Copay Card provides support up to the Maximum Monthly Benefit, the Maximum Annual Program Benefit and/or Patient Total Program Benefit. If a patient's commercial insurance plan imposes different or additional requirements on patients who receive Repatha® Copay Card benefits, Amgen has the right to reduce or eliminate those benefits. Whether you are eligible to receive the Maximum Monthly Benefit, Maximum Program Benefit or Patient Total Program Benefit is determined by the type of plan coverage you have. Please ask your RepathaReady® counselor to help you understand eligibility for the Repatha® Copay Card, and whether your particular insurance coverage is likely to result in your reaching the Maximum Monthly Benefit, the Maximum Annual Program Benefit, or your Patient Total Program Benefit, by calling 1-844-REPATHA (1-844-737-2842).
- Please see the full Terms and Conditions at [Repatha.com/copay](https://Repatha.com/copay).

### NOT COMMERCIALLY INSURED?

Visit [Repatha.com/cost](https://Repatha.com/cost) to learn what you might pay for Repatha®.

[VISIT REPATHA.COM/COST](https://Repatha.com/cost)

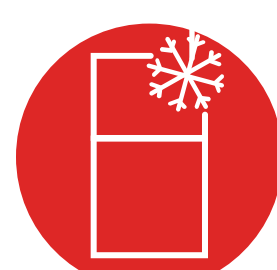
Or call your insurance plan to understand your coverage.

# GETTING STARTED

## A FEW THINGS YOU SHOULD CONSIDER BEFORE YOUR FIRST INJECTION:



Plan your injection dates—the first one and the ones after. Each carton has a month’s supply of Repatha<sup>®</sup>.



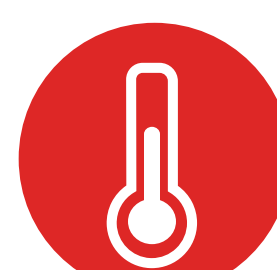
Make room in the refrigerator (36°F to 46°F) to store Repatha<sup>®</sup> in its original carton to protect it from the light. Before injecting Repatha<sup>®</sup>, you’ll need to take the device out of the fridge and let it warm up to room temperature.



Be ready to dispose of the used device in a sharps disposal container (available at your pharmacy).

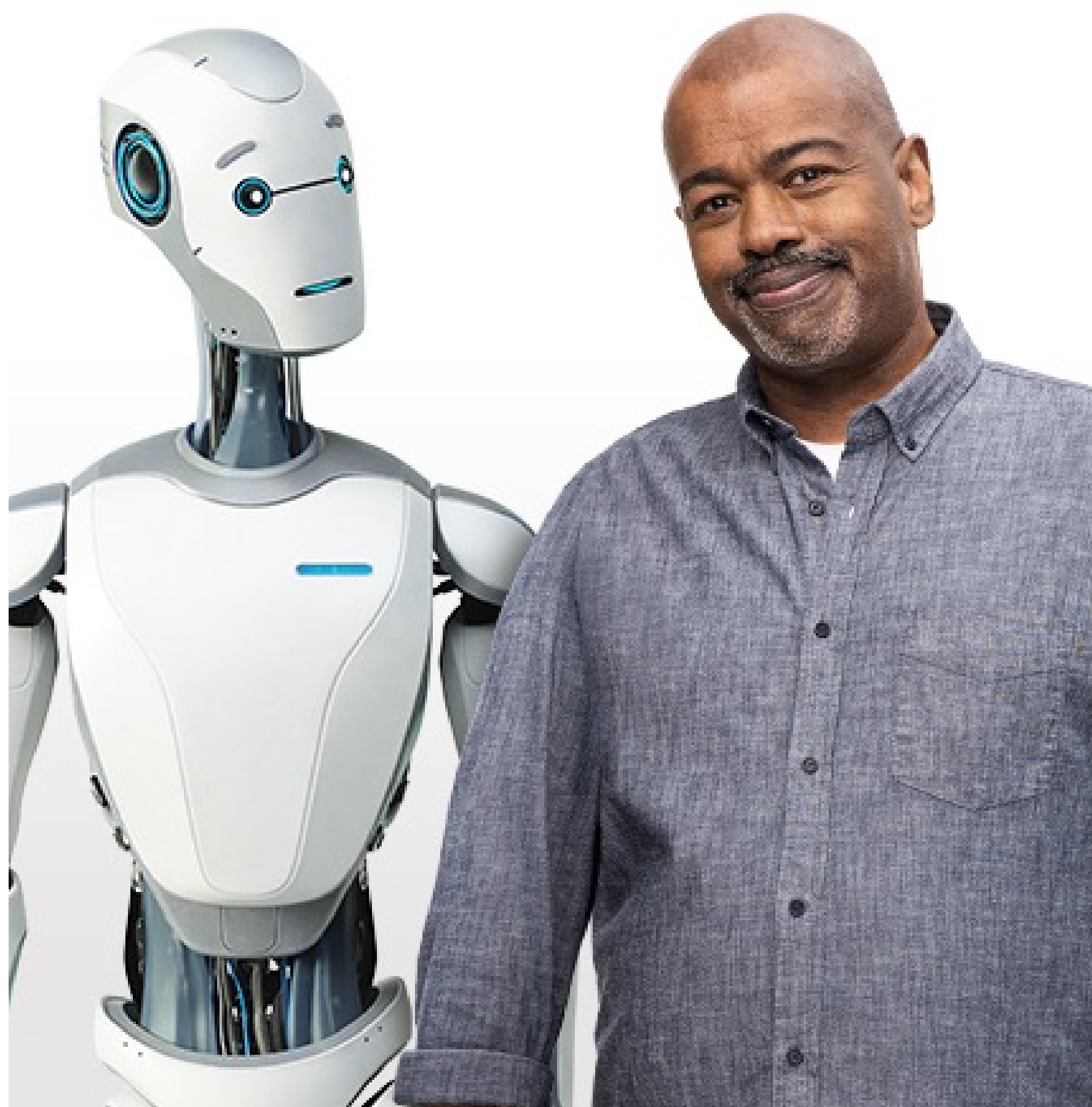


When traveling, check your airlines’ carry-on policy on needles. Bring a copy of your prescription or doctor’s note for airport security. Make sure Repatha<sup>®</sup> is clearly labeled or in its original carton.



Repatha<sup>®</sup> will remain good for use for up to 30 days if kept at room temperature (68° to 77°F).

For detailed information prior to injection, please read the [Instructions for Use](#)



## REGISTER FOR REPATHAREADY<sup>®</sup>

RepathaReady<sup>®</sup> offers resources and support to help you stay on track of your Repatha<sup>®</sup> treatment for your high bad cholesterol. If you’d like, click here to sign up for reminders.

[SIGN UP FOR REMINDERS](#)

WELCOME TO  
REPATHA<sup>®</sup>

FILLING YOUR  
PRESCRIPTION

GETTING  
STARTED

HOW TO  
USE REPATHA<sup>®</sup>

WHAT TO  
EXPECT ON  
REPATHA<sup>®</sup>

REAL  
PATIENT  
STORIES

IMPORTANT  
SAFETY  
INFORMATION

SUPPORT



# HOW TO USE REPATHA<sup>®</sup>

## EVERY 2 WEEKS

140 mg/mL



### SureClick<sup>®</sup> Autoinjector

Single-dose prefilled autoinjector. At-home self-injection with hand-held device.



See video demonstrating how to use your SureClick<sup>®</sup> AutoInjector

Click [here](#) for Instructions for Use

## ONCE A MONTH

420 mg/3.5 mL



### Pushtronex<sup>®</sup> System

Single-dose on-body infusor with prefilled cartridge. At-home self-injection with hands-free device.



See video demonstrating how to use your Pushtronex<sup>®</sup> System

Click [here](#) for Instructions for Use

For detailed information prior to injection, please read the Instructions for Use, which is located in the back of every box of Repatha<sup>®</sup>.

**Get nurse support, including injection support over the phone and videoconference, from the RepathaReady<sup>®</sup> Nurse\* Program. Nurses are available 7 days a week by phone. Call 1-844-REPATHA (1-844-737-2842) 8AM - 11PM EST.**

\*RepathaReady<sup>™</sup> Nurses are nurses by training, but they are not part of your treatment team or an extension of your doctor's office

## IMPORTANT SAFETY INFORMATION

**Before you start using Repatha<sup>®</sup>,** tell your healthcare provider about all your medical conditions, including if you are allergic to rubber or latex, are pregnant or plan to become pregnant, or are breastfeeding or plan to breastfeed.

4 Please see additional Important Safety Information [here](#).

# WHAT TO EXPECT ON REPATHA<sup>®</sup>

For adults with heart disease

## DRAMATICALLY LOWER BAD CHOLESTEROL

Keep track of your bad cholesterol and continue taking Repatha<sup>®</sup>. Taken with a statin, it can help dramatically lower bad cholesterol. In clinical trials:

- Up to **90%** of people saw their bad cholesterol levels drop dramatically to 70 mg/dL or below at 48 weeks
- Repatha<sup>®</sup> works in just **1 month**
- By adding Repatha<sup>®</sup> to a statin, patients are able to achieve a 63% average reduction in bad cholesterol **in just 3 months**

Bad cholesterol is not a curable condition, but it can be managed. Continue taking Repatha<sup>®</sup> so that you can see positive results. If you stop taking Repatha<sup>®</sup> your LDL cholesterol levels can increase. You should not stop taking Repatha<sup>®</sup> without talking to your doctor.

### TRACKING BAD CHOLESTEROL (LDL) AND SETTING GOALS

Download and save this editable PDF chart to keep track of your bad cholesterol numbers (measured in mg/dL) and set your goals as you go forward with Repatha<sup>®</sup>. When you see your doctor don't forget to schedule a follow-up to check your levels.

[DOWNLOAD TRACKER](#)

### IMPORTANT SAFETY INFORMATION

#### What are the possible side effects of Repatha<sup>®</sup>?

The most common side effects of Repatha<sup>®</sup> include: runny nose, sore throat, symptoms of the common cold, flu or flu-like symptoms, back pain, high blood sugar levels (diabetes) and redness, pain, or bruising at the injection site.

Please see additional Important Safety Information [here](#).



# REAL PEOPLE TAKING REPATHA® + A STATIN

**Repatha®**  
(evolocumab) injection 140 mg/mL

WELCOME TO  
REPATHA®

FILLING YOUR  
PRESCRIPTION

GETTING  
STARTED

HOW TO  
USE REPATHA®

WHAT TO  
EXPECT ON  
REPATHA®

REAL  
PATIENT  
STORIES

IMPORTANT  
SAFETY  
INFORMATION

SUPPORT



“ I always struggled to get my cholesterol down to an acceptable level and **I COULDN'T GET LDLs UNDER 100.** After being on Repatha® for not even months, my LDLs went down to 26. Repatha® changed the game. ”

- ANDY

“ With Repatha®, **MY LDL HAD DROPPED FROM OVER 100, DOWN TO 40.**

My grandchildren know I have Repatha®, and they know it's working for me. ”

- CATHY



“ When I first went on Repatha®, **my LDL went from 130, all the way down to 35.** I am very happy to see my LDL report now and I thank Repatha® for that. ”

- JOE

*Individual results may vary*

Want to hear more stories? Go to [www.Repatha.com/patient-stories](http://www.Repatha.com/patient-stories)

## IMPORTANT SAFETY INFORMATION

**Before you start using Repatha®**, tell your healthcare provider about all your medical conditions, including if you are allergic to rubber or latex, are pregnant or plan to become pregnant, or are breastfeeding or plan to breastfeed.



# IMPORTANT SAFETY INFORMATION

**Do not use Repatha<sup>®</sup> if you** are allergic to evolocumab or to any of the ingredients in Repatha<sup>®</sup>.

**Before you start using Repatha<sup>®</sup>,** tell your healthcare provider about all your medical conditions, including if you are allergic to rubber or latex, are pregnant or plan to become pregnant, or are breastfeeding or plan to breastfeed. The needle covers on the single-dose prefilled syringes and the inside of the needle caps on the single-dose prefilled SureClick<sup>®</sup> autoinjectors contain dry natural rubber. The single-dose Pushttronex<sup>®</sup> system (on-body infusor with prefilled cartridge) is not made with natural rubber latex.

Tell your healthcare provider or pharmacist about any prescription and over-the-counter medicines, vitamins, or herbal supplements you take.

## **What are the possible side effects of Repatha<sup>®</sup>?**

Repatha<sup>®</sup> can cause serious side effects including serious allergic reactions. Stop taking Repatha<sup>®</sup> and call your healthcare provider or seek emergency help right away if you have any of these symptoms: trouble breathing or swallowing, raised bumps (hives), rash or itching, swelling of the face, lips, tongue, throat or arms.

The most common side effects of Repatha<sup>®</sup> include: runny nose, sore throat, symptoms of the common cold, flu or flu-like symptoms, back pain, high blood sugar levels (diabetes) and redness, pain, or bruising at the injection site.

Tell your healthcare provider if you have any side effect that bothers you or that does not go away.

These are not all the possible side effects of Repatha<sup>®</sup>. Ask your healthcare provider or pharmacist for more information. Call your healthcare provider for medical advice about side effects.

**You are encouraged to report negative side effects of prescription drugs to the FDA. Visit [www.fda.gov/medwatch](http://www.fda.gov/medwatch), or call 1-800-FDA-1088.**

**Please see Repatha<sup>®</sup> full Prescribing Information.**

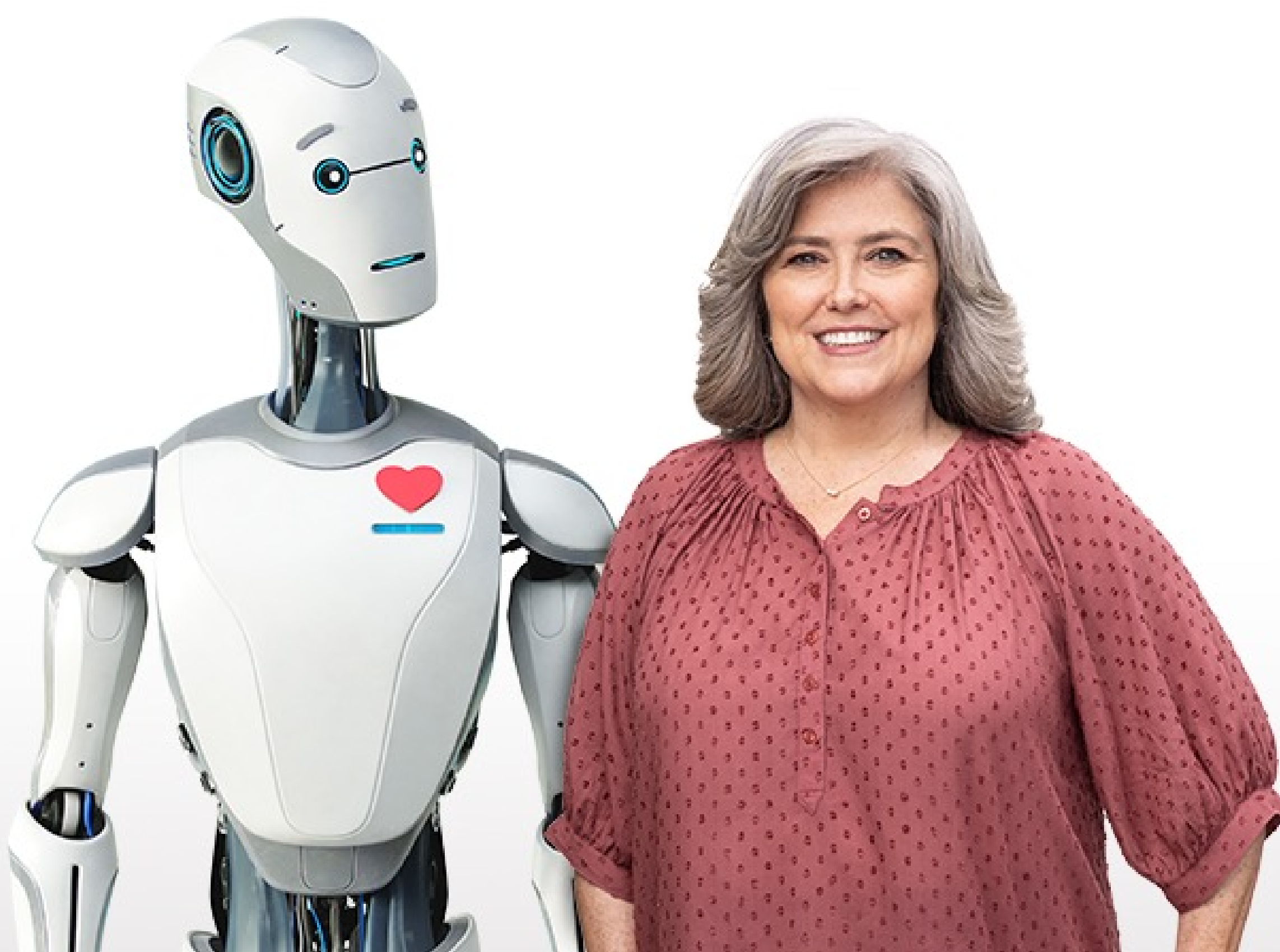
# WE'RE HERE FOR YOU

**Repatha**<sup>®</sup>  
(evolocumab) injection 140 mg/mL

**There's a lot to learn when starting a new medication. It's natural to have questions. We're here to provide answers.**

**GO TO  
REPATHA.COM**

**GIVE US A CALL AT  
1-844-REPATHA**



## **Want to plan ahead?**

Download our doctor discussion guide to help facilitate a productive conversation with your doctor during your future follow-up appointments.

**DOWNLOAD DOCTOR  
DISCUSSION GUIDE**

**AMGEN**<sup>®</sup>

Cardiovascular



## Tracking my bad cholesterol (LDL)

Use this chart to keep track of your bad cholesterol number (measured in mg/dL) as you go forward on Repatha®. When you see your doctor, don't forget to **schedule a follow-up** to check your levels.

### MY GOAL:

(set by my doctor)

### CHECK IN/VISIT

### DATE

<i><b>Example:</b></i> <i>Today's visit</i>	<i>3/26/2020</i>	<b>LDL</b> <i>148</i>	<b>NOTES/THOUGHTS</b> <i>Received Repatha® prescription</i>
<b>Today's visit</b>			
<b>Follow-up 1</b>			
<b>Follow-up 2</b>			
<b>Follow-up 3</b>			
<b>Follow-up 4</b>			

**Remember that if you stop taking Repatha®, your bad cholesterol can increase. You should not stop taking Repatha® without talking to your doctor.**

### Approved Use

Repatha® is an injectable prescription medicine used:

- in adults with cardiovascular disease to reduce the risk of heart attack, stroke, and certain types of heart surgery.
- along with diet alone or together with other cholesterol-lowering medicines in adults with high blood cholesterol levels called primary hyperlipidemia (including a type of high cholesterol called heterozygous familial hypercholesterolemia [HeFH]) to reduce low density lipoprotein (LDL) or bad cholesterol.

### Important Safety Information

**Do not use Repatha® if you** are allergic to evolocumab or to any of the ingredients in Repatha®.

**Please see additional Important Safety Information on page 2.**



## **Important Safety Information (Continued)**

**Before you start using Repatha® (evolocumab)**, tell your healthcare provider about all your medical conditions, including if you are allergic to rubber or latex, are pregnant or plan to become pregnant, or are breastfeeding or plan to breastfeed. The needle covers on the single-dose prefilled syringes and the inside of the needle caps on the single-dose prefilled SureClick® autoinjectors contain dry natural rubber. The single-dose Pushtronex® system (on-body infusor with prefilled cartridge) is not made with natural rubber latex.

Tell your healthcare provider or pharmacist about any prescription and over-the-counter medicines, vitamins, or herbal supplements you take.

### **What are the possible side effects of Repatha®?**

Repatha® can cause serious side effects including serious allergic reactions. Stop taking Repatha® and call your healthcare provider or seek emergency help right away if you have any of these symptoms: trouble breathing or swallowing, raised bumps (hives), rash or itching, swelling of the face, lips, tongue, throat or arms.

The most common side effects of Repatha® include: runny nose, sore throat, symptoms of the common cold, flu or flu-like symptoms, back pain, high blood sugar levels (diabetes) and redness, pain, or bruising at the injection site.

Tell your healthcare provider if you have any side effect that bothers you or that does not go away.

These are not all the possible side effects of Repatha®. Ask your healthcare provider or pharmacist for more information. Call your healthcare provider for medical advice about side effects.

**You are encouraged to report negative side effects of prescription drugs to the FDA. Visit [www.fda.gov/medwatch](http://www.fda.gov/medwatch), or call 1-800-FDA-1088.**

**Please see Repatha® full Prescribing Information.**

© 2020–2021 Amgen Inc. All rights reserved. USA-145-82663